



# PRODUCT DROP

3RD EDITION



### 1000T PIT CLEANER BY RING-O-MATIC

[www.ring-o-matic.com](http://www.ring-o-matic.com)



The Ring-O-Matic 1000T is a clamshell style pit cleaner that is perfect for Carwash owners or Contractors who clean drive-over style pits. The 1000T is operated by using hydraulic controls located on the back of the machine which allows perfect sight into the pit. By using the clam shell style pit cleaner, the operator removes the debris and sludge while leaving the water behind to be recycled. The 1000T weighs 9,990 lbs. fully loaded. This means it can be safely and legally pulled by a suitably equipped full-size pick-up. We have had reports that when using a 1000T, car wash owner/operators can reduce pit cleaning costs by more than \$10,000 per year in an operation that has 20, car wash bays. This gives them a quick return on their investment.

Contact: [jgunnink@ring-o-matic.com](mailto:jgunnink@ring-o-matic.com)

### 850 SUPER VAC BY RING-O-MATIC

[www.ring-o-matic.com](http://www.ring-o-matic.com)



The Ring-O-Matic 850 Super Vac is a vac-only unit that has many different options to ensure the customer is getting a machine that works best for their needs. Equipped more endless application uses, the 850 Super Vac offers a wide range of power options as well as blower options with different CFM and Max Hg ratings. The 850 Super Vac also has an optional 100 gallon fresh water tank attached to a 3.5 GPM @ 3000 psi pressure washer system. The machine is low profile and the narrowest in its class allowing for easy maneuverability in and out of jobsites. Along with all of this, the 850 Super Vac has optional reverse flow which is great for quick unloading. At the 850 Super Vac's competitive price, it is the best and most customizable vac-only machine on the market.

Contact: [jgunnink@ring-o-matic.com](mailto:jgunnink@ring-o-matic.com)

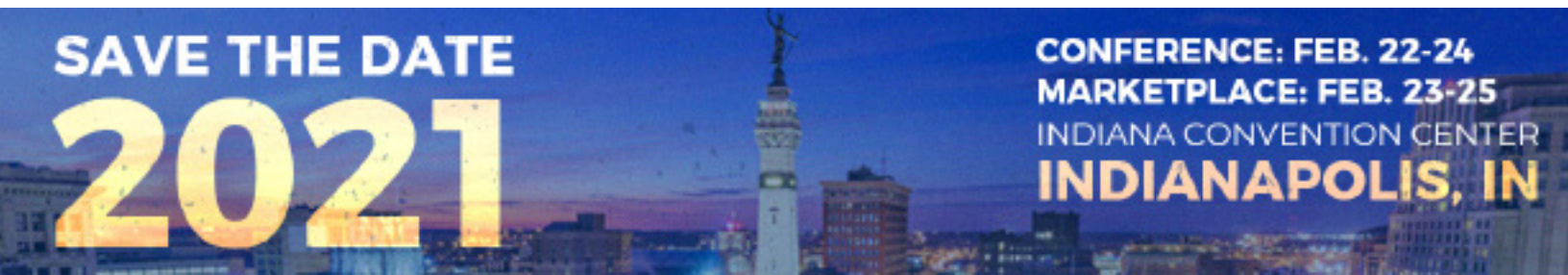
### 350 VX HICFM AIR-COMBO BY RING-O-MATIC

[www.ring-o-matic.com](http://www.ring-o-matic.com)



The Ring-O-Matic 350VX HiCFM Air Combo truck provides versatility in hydro and air excavation applications, all wrapped up in a truck mounted package that doesn't require your operator to have a CDL. We recognize that not all applications and ground conditions require the same tool for the job. Air compressor options ranging from 75 to 150 CFM, are ideal for those conditions that are rocky and hard to hydro excavate. If hydro is your way to go, the 350VX HiCFM Air Combo truck has you covered. Safely digging around what's buried below is vitally important, and you can count on the 6gpm, 4000psi water pump backed by 1000 CFM blower to daylight buried utilities, excavate holes for street and road signs or clean up liquid materials safely and fast to keep your job expenses low and your productivity high.

Contact: [jgunnink@ring-o-matic.com](mailto:jgunnink@ring-o-matic.com)



SAVE THE DATE  
**2021**

CONFERENCE: FEB. 22-24  
MARKETPLACE: FEB. 23-25  
INDIANA CONVENTION CENTER  
**INDIANAPOLIS, IN**

## SLX1300 PIPE EXTRACTION SYSTEM BY HAMMERHEAD

[www.hammerheadtrenchless.com](http://www.hammerheadtrenchless.com)

Pipe extraction using the patented SLX1300 is an innovative new method of replacing coated and bare steel gas service lines 0.5 to 1.25 inches in diameter, up to 100 feet in length. The hydraulically powered SLX1300 unit produces up to 13.3 tons of pulling force to extract the pipe from the ground while simultaneously pulling new HDPE or MDPE pipe into the same location as the existing pipe, reducing risk to surrounding utilities.

“HammerHead has a strong track record of working closely with crews in the field to find cost-effective solutions for addressing deteriorating gas pipelines,” said Josh Hood, HammerHead Trenchless senior product manager. “A gas company approached us about finding a trenchless way to replace bare steel and our engineering team applied operator feedback to design the SLX1300 to meet needs unique to the gas market. The final design includes innovative features to minimize excavation and reduce operating requirements.” One feature is the unit’s on-board pipe shear that the operator engages to cut the pipe material as it is extracted into manageable segments for easy disposal.

The SLX1300 is available from HammerHead Trenchless authorized dealers in North America. Authorized dealers can be found on the web at [www.hammerheadtrenchless.com](http://www.hammerheadtrenchless.com) or by calling 800.331.6653.”

**Contact:** Chelsea Denissen

PRODUCT

EXHIBITOR



## HOTJET II® HOT WATER TRAILER JETTER BY HOTJET USA

<https://www.hotjetusa.com>

The HotJet II is the best selling mid-range jetter trailer by HotJet USA. It operates at 10GPM @ 4,000 PSI with a 35HP Vanguard Engine by Toyota on a heavy duty industrial tandem axle trailer. The HotJet II cleans 2”-12” drains, runs with cold or hot water and is dual purpose with power washing tools for cleaning, disinfecting and sanitation.

**Contact:** 1-800-624-8186

PRODUCT

EXHIBITOR



## SCANIA PUMP POWER UNIT BY MECO

[www.mcdonaldequipment.com](http://www.mcdonaldequipment.com)

“Our streamlined engines are high-performing machines with a strong power-to-weight ratio. When powered by Scania, pump operators can expect instant response, uncompromising torque at low RPMs, and agile performance at any speed. Scania power is available for utilization whenever needed and makes hard work efficient, even during long, grueling projects.

With Scania Tier 4F powered pumps, will never suffer with a regeneration thanks to our no Diesel Particulate Filter (DPF) solution.”

**Contact:** [r.brainard@mcdonaldequipment.com](mailto:r.brainard@mcdonaldequipment.com)

PRODUCT

SAVE THE DATE

2021

CONFERENCE: FEB. 22-24  
MARKETPLACE: FEB. 23-25  
INDIANA CONVENTION CENTER  
INDIANAPOLIS, IN





**N700 SERIES BY HANNAY REELS INC.**

[www.hannay.com](http://www.hannay.com)

"Hannay's N700 Series is the most versatile reel for the sewer cleaning industry. With a narrow frame, compact base and variety of mounting options and roller positions this reel can be installed anywhere. This series handles 1/4" through 1/2" ID hose, standard pressure up to 3000 psi for everyday wash down needs, or available up to 10,000 psi for high pressure sewer cleaning or steam cleaning operations. The N700 is a standard spring rewind reel with a non-sparking ratchet assembly and de-clutching arbor to prevent damage from reverse winding. Visit [www.hannay.com](http://www.hannay.com) for more information."

Contact: [reels@hannay.com](mailto:reels@hannay.com)



**JETTER REEL BY HANNAY REELS INC.**

[www.hannay.com](http://www.hannay.com)

"Hannay Reels HDD 6300 Series is designed for front bumper jetting applications. This series is constructed with a heavy-duty spool and frame and a direct drive hydraulic motor that utilizes a planetary gearbox for increased power. This series handles up to 1000 feet of 1" ID jetter hose and pressure up to 3000 psi. An optional swivel mount makes this reel ideal for front mount jetter operations.

Standard features include thick discs and base plate for strength and rigidity, rolled drum to handle long lengths of hose and 3" square tubing frame for over-road durability. Options include a chain and sprocket drive (in place of planetary gearbox) and powered swing bearing in base plate for swiveling capability. Visit [www.hannay.com](http://www.hannay.com) for details."

Contact: [reels@hannay.com](mailto:reels@hannay.com)



**VACUUM HOSE REELS BY HANNAY REELS INC.**

[www.hannay.com](http://www.hannay.com)

Hannay Reels offers heavy-duty reels for longer length/large diameter vacuum hose through 4". Available for live vacuum hose to connect to a tank or storage only, this series provides effortless and fast winding of hose, easy access from both sides of the vehicle and a cleaner way to use and store hose. Hannay offers manual or power rewinds options and a variety of different mounting configurations depending on tank/truck size constraints. Visit [www.hannay.com](http://www.hannay.com) for more information.

Contact: [reels@hannay.com](mailto:reels@hannay.com)

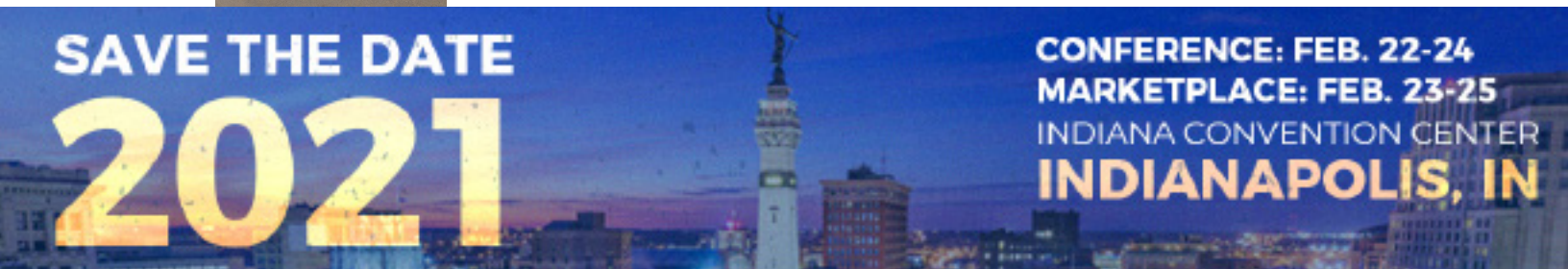


**SPEEDCUT BY EPL SOLUTIONS, INC.**

[www.epls-usa.com](http://www.epls-usa.com)

The SpeedCut is a high-speed chain cutter for cleaning, descaling and prepping 2 - 6 inch pipe lines. Compact and half the weight of regular chain cutting machines, this powerful machine can be easily operated and maneuvered by one person. With rotational speeds up to 3200 RPMs, the anti-flip SpeedShaft cable runs smoothly in the most harsh conditions. The unique snap-on connector for cable ends makes a quick and easy setup, designed for users to hand-crimp onto the cable.

Contact: 714-453-9760





**GVISION CAMERA SYSTEM BY EPL SOLUTIONS, INC.**

[www.epls-usa.com](http://www.epls-usa.com)

Rugged and simple to operate, the Gvision Camera System is an affordable camera solution with user-friendly functionality. Easily record inspections with One Touch® technology onto a USB flash drive or Apple® device. A built-in microphone allows you to record your voice to videos and playback on a mobile device. Capture every detail with the 1.3" color, self-leveling camera head and clearly view your inspections on the 10.4" anti-glare LCD screen.

**Contact:** 714-453-9760

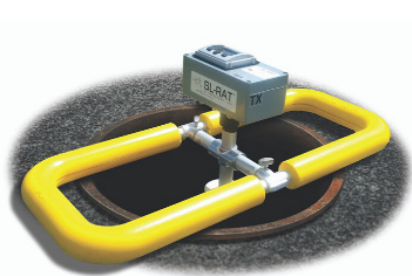


**MADDOG PREMIUM NOZZLE BY EPL SOLUTIONS, INC.**

[www.epls-usa.com](http://www.epls-usa.com)

The MadDog Nozzle made by enz®, sold by EPL Solutions, Inc., is a redesigned Bulldog nozzle with optimized ceramic inserts for the highest ideal cutting power. Spinning 3 times faster than mainstream nozzles, it removes aggressive tree roots in flows as low as 5.5 GPM at 3500 PSI with 3/8 inch hose and up to 18 GPM at 4000 PSI with 1/2 inch hose. It is perfect for accessing main line stoppages from a 2 inch toilet roof vent, wall clean out or 8 inch manhole using a skid body due to it only being 1.5 inches diameter and 3.3 inches in length. A front oscillating penetrating insert is included and can be installed by the user for front cutting. The MadDog's extreme durability comes from its hardened steel body and oil free, zero maintenance feature.

**Contact:** 714-453-9760



**SEWER LINE RAPID ASSESSMENT TOOL (SL-RAT) BY INFOSENSE, INC.**

[HTTPS://INFOSENSE.COM/](https://infosense.com/)

Focus sewer cleaning efforts with the Sewer Line Rapid Assessment Tool (SL-RAT®) by InfoSense. In 3 minutes or less, this award-winning acoustic inspection technology can assess blockage conditions within gravity sewers. By screening 10-20,000 feet/day at low-cost, the SL-RAT can help focus expensive cleaning resources to areas with identified need. Portable, GPS enabled, no-flow contact and EPA validated. Over 200 million feet inspected.

**Contact:** Jeff Aronson at 941.355.8451

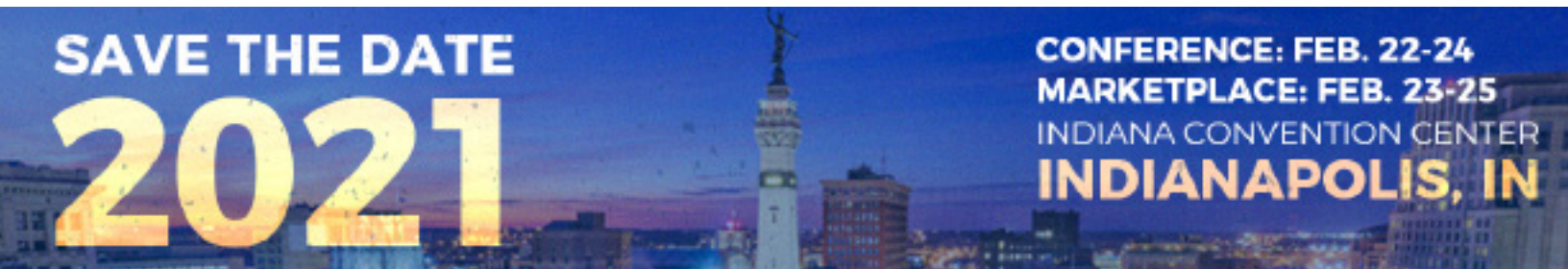


**SUMP PUMP MAINTENANCE, REPAIR, AND PIT CLEANING SERVICES BY ASSET PUMPING SERVICE**

[www.assetpumpingservices.com](http://www.assetpumpingservices.com)

Storm drain basins, car wash basins, sewage basins- we power wash, vacuum, and remove all debris from the basin. We offer manifests upon request. Sump pump maintenance, repairs and rebuilds available. We also take small service requests.

**Contact:** [assetpumpingservices@gmail.com](mailto:assetpumpingservices@gmail.com)



SAVE THE DATE

2021

CONFERENCE: FEB. 22-24  
MARKETPLACE: FEB. 23-25  
INDIANA CONVENTION CENTER  
INDIANAPOLIS, IN





### RHINO DIRT

[www.rhinodirt.com](http://www.rhinodirt.com)

“Rhino Dirt is a polymer spill cleanup solution. It instantly sucks up thick, sticky polymers - and leaves no slippery residue! Our lightweight, 4-pound bag completely absorbs up to two gallons of Polymers. Sweep it up with a broom, and you are done in minutes, not hours. See why thousands of wastewater treatment plants throughout North America have switched to Rhino Dirt by visiting our website and viewing videos at: <https://www.youtube.com/channel/UCOY2cTjsrZ505O7qJ3xPrCg>

Rhino Dirt is a maximum strength industrial absorbent & degreaser that completely and immediately absorbs all liquid-based hydrocarbons. For any questions, please contact us at [sales@rhinodirt.com](mailto:sales@rhinodirt.com)”

Contact: [sales@rhinodirt.com](mailto:sales@rhinodirt.com)



### JOKA GLOVES & MITTENS BY CHS SNOWMAKERS

<https://www.chssnowmakers.com/joka-gloves/>

Joka Polar Gloves and Joka Therm Mittens are flexible and durable; designed for work in cold, wet conditions, with oils and chemicals. Removable and replaceable artificial fur lining keeps your hands warm! A durable, double-vinyl outer shell stays flexible in freezing temps to -50°C. Granulated waterproof surface keeps a firm grip in dry, wet, and even oily conditions.

Contact: [ksawin@CHSnSnowmakers.com](mailto:ksawin@CHSnSnowmakers.com)



### VACUUM EXCAVATORS, VALVE EXERCISERS BY PACIFIC TEK/ AMF

[www.pacific-tek.com](http://www.pacific-tek.com)



Pacific Tek is an industry leader in the manufacture and sales of high-quality Vacuum Excavators and water Valve Exercisers since 1993. We are known as the “Original Manufacturer of Angled Tank series POWER VACS™”. Pacific Tek manufactures nine different sizes of “Power Vacs™” used widely in the Construction, Utilities, and Rehabilitation/Remediation industries. Models PV66 up to PV1200 can be supplied as skid-mounted, Trailer or Truck bed-mounted complete systems with Vacuum, high-pressure washing, Sewer Jetter skids, Manual or Hydraulic Vacuum Hose Support Booms, and custom Safety lighting. Power drives include standard output Gas engines to Propane or Hydraulic motors to Diesel High Output models. Low Profile skid and trailer models available for large parking structure maintenance and mining dewatering applications (“sump sucker”).

Whether your application calls for digging holes, potholing, cleaning out car wash pits and vaults, sucking up HDD drillers mud, dewatering holes or pits, picking up small material such as stones, gravel, sand, ash, soil, etc. you can rely on a “Power Vac™” to do the job safely and efficiently.”

Contact: [sales@pacific-tek.com](mailto:sales@pacific-tek.com)



SAVE THE DATE  
**2021**

CONFERENCE: FEB. 22-24  
MARKETPLACE: FEB. 23-25  
INDIANA CONVENTION CENTER  
**INDIANAPOLIS, IN**



**OXFORD'S COMPOSITE TRENCH COVERS BY OXFORD PLASTICS USA**

[www.oxfordplasticsusa.com](http://www.oxfordplasticsusa.com)

Covering a trench in a driveway, sidewalk, or yard? Reduce installation time and reinstatement costs with the LowPro 1510. Two person lift eliminates need for heavy lifting equipment. FlexiEdge technology reduces trip hazard, reduces unwanted movement, and eliminates need for cold patch.

The LowPro 1510 supports 7716 lb. vehicles over a 35.4" span trench, and pedestrians over 47.25" span. Have a longer trench? Bolt together a run of 1510s with the LowPro Infill. Suitable for foot traffic and wheelchairs. Long lasting over multiple uses, unlike plywood. Anti-trip chamfered edges. Gas vents & probe hole designed into the product. Brand with corporate color & logo.

**Contact:** 800-567-9182



**AUTOCODE BY SEWERAI**

[www.sewerai.com](http://www.sewerai.com)

AutoCode-SewerAI has developed an Artificial Intelligence-based (AI) tool, AutoCode- to automatically label defects in sewer pipe inspection videos using existing condition assessment standards for defects and features, which significantly increases the production of condition reports on wastewater, storm, and drinking water assets, while also reducing total inspection costs.



AutoCode- is software public agencies, engineering consultants, and inspection services contractors are using to assist with condition assessment of large amounts of pipeline video.

Offered as a turn-key Labeling as a Service, or for use by a customer's in-house condition assessment team, AutoCode- enables asset owners to inspect more of their sewer collection system more affordably, in a shorter amount of time, and enhances the quality and consistency of data."

**Contact:** [esullivan@sewerai.com](mailto:esullivan@sewerai.com)

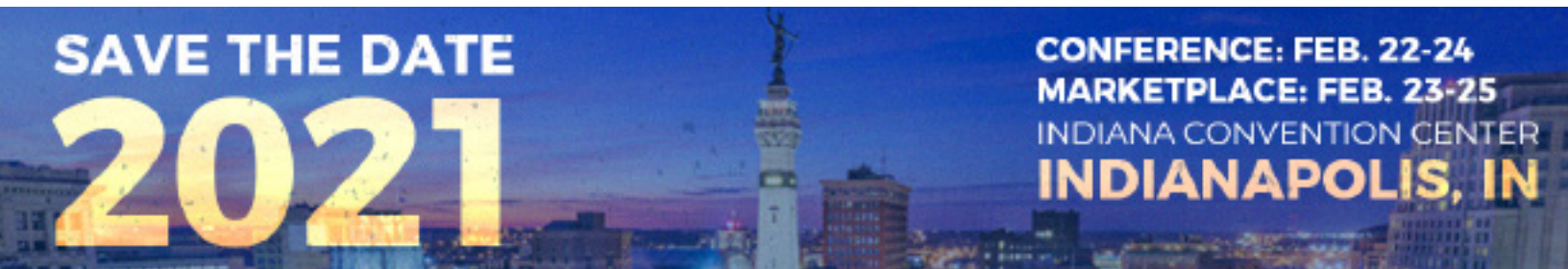


**XHF TOP FEED GUN BY GRACO INC.**

[www.graco.com/contractor](http://www.graco.com/contractor)

Graco's XHF gun is designed for high-flow, high-pressure applications. It handles the most demanding high-viscosity, protective coatings, including epoxy intumescent coatings and fiber-filled materials. Now get the XHF gun with a top feed fluid housing, perfect for overhead entry applications such as wet-wells or manholes.

**Contact:** [cbeall@graco.com](mailto:cbeall@graco.com)



SAVE THE DATE

2021

CONFERENCE: FEB. 22-24  
 MARKETPLACE: FEB. 23-25  
 INDIANA CONVENTION CENTER  
 INDIANAPOLIS, IN





**THE RUDY TOOL # 1 & 2  
BY THE RUDY TOOL LLC**

[www.therudytool.com](http://www.therudytool.com)

THE RUDY TOOL# 1 is a Safety Tool, used on Fire Hydrant Water Valve Cap lifter.

- No more use of Screwdrivers
- Also used on other Utilities Covers.

THE RUDY TOOL # 1 is made from U.S. STEEL and handle grip made of hard Polymere.

THE RUDY TOOL# 2 is a Sewer Clean-Out Cap Wrench.

- Removes 4 and 3 inch with 16 Combination attachments to fit tightly for removal.
- Also used by Tech's for removal of Residential Sewer Clean-Out Caps.

A Plumbers Combination Wrench. No more worries on breaking Sewer Caps. A Residential Sewer Clean-Out Cap remover, In case of an emergency for quick relief pressure tool.

THE RUDY TOOL # 2 is made of Polymere hard materials."

Contact: tankgunnyrod@comcast.net

**CDMAXE FLEXIBLE CENTERING DEVICE BY  
ARTHUR PRODUCTS CO.**

[www.arthurproducts.com](http://www.arthurproducts.com)



The Arthur Products Co. (APC) "CENTERING DEVICE (CD-MAX) is manufactured from an aerospace elastomer. The CD-MAX is flexible enough to conform to damaged or deformed sewer lines and can easily be fitted in the field to fit virtually any line from 3" to 6" in diameter. Simply attach your 1/4", -" or 1/2" npt hose to one end of the CD-MAX and your favorite 1/4", -" or 1/2" npt nozzle to the other end of the CD-MAX and you are ready to tackle the task at hand. Three flexible light weight centering guides 3", 4" and 6" diameters can quickly be changed in the field to stabilize and center the nozzle for cleaning. The CD-MAX comes in two versions; an Economy Kit and a Deluxe Kit. A 10K rated stainless steel body is utilized in both kits. <https://arthurproducts.com/products/cd-max-jet-nozzle/>

Contact: apc@apclsq.com



**M18 FUEL- SWITCH PACK- SECTIONAL  
DRUM SYSTEM BY MILWAUKEE TOOL**

<https://www.milwaukeetool.com/>



"Milwaukee Tool's M18 FUEL- SWITCH PACK- Sectional Drum System 5/16"" Kit is the first drain cleaning solution that combines the benefits of sectional and drum machines, creating the single most versatile and mobile machine on the market. The drain cleaning machine allows you to tackle the most frequent challenge of any drain cleaning application - getting the machine onto the job.

The SWITCH PACK- is also compatible with our CABLE DRIVE- Assembly (47-53-2774) that allows you to automatically feed and retract cable up to 15-20 feet per minute. The CABLE DRIVE- assembly quickly attaches to and swaps between any Milwaukee SWITCH PACK- Drum with the Mounting Plate (47-53-2773) installed."

Contact: Customer.Service@milwaukeetool.com



SAVE THE DATE  
**2021**

CONFERENCE: FEB. 22-24  
MARKETPLACE: FEB. 23-25  
INDIANA CONVENTION CENTER  
**INDIANAPOLIS, IN**



**DT320 MINI PIPE CRAWLER BY DEEP TREKKER INC.**

[www.deeptrekker.com](http://www.deeptrekker.com)

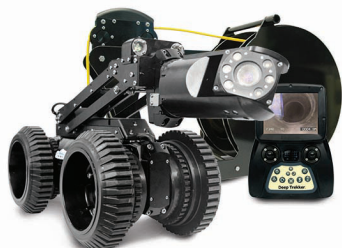


The DT320 Mini Pipe crawler is designed with portability in mind. Allowing operators to conduct storm and wastewater inspections without the need for topside power. Complete in one compact carrying case, the out of the box system is deployable without generators or power supply onsite. With an easy to use controller, it is the only battery-operated CCTV pipe crawler of its kind. Don't let its size fool you! The DT320 Mini is constructed with anodized die-cast aluminum, stainless steel and a sapphire glass camera lens. It is built to withstand the daily grind of sewer and stormwater pipe inspections.

Contact: [twalker@deeptrekker.com](mailto:twalker@deeptrekker.com)

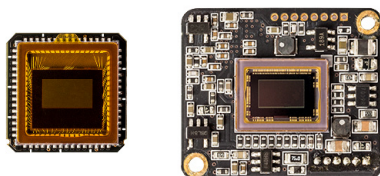
**DT340 PIPE CRAWLER BY DEEP TREKKER INC.**

[www.deeptrekker.com](http://www.deeptrekker.com)



The DT340 Mini Pipe crawler is designed with portability in mind. Allowing operators to conduct storm and wastewater inspections without the need for topside power. Complete in one compact carrying case, the out of the box system is deployable without generators or power supply onsite. With an easy to use controller, it is the only battery-operated CCTV pipe crawler of its kind. Don't let its size fool you! The DT340 Mini is constructed with anodized die-cast aluminum, stainless steel and a sapphire glass camera lens. It is built to withstand the daily grind of sewer and stormwater pipe inspections.

Contact: [twalker@deeptrekker.com](mailto:twalker@deeptrekker.com)



**SMALL SEWER CAMERAS BY NLSKOOPIA**

[www.skoopia.com](http://www.skoopia.com)

Small Full HD sewer cameras (0.55" x 0.55" and 0.87" x 1.02"), with long time availability for OEM integration.

Upgrade from CVBS to Full HD (1080p30) without any hassle. Use the same cabling, meter read and overlay commenting solution available.

Contact: [info@skoopia.com](mailto:info@skoopia.com)



**TORCH- SAWZALL® BLADE WITH NITRUS CARBIDE- BY MILWAUKEE TOOL**

<https://www.milwaukeetool.com/>



Milwaukee Tool's SAWZALL® The TORCH- with NITRUS CARBIDE- for CAST IRON and other thick metals is the next generation of carbide teeth technology. This SAWZALL® blade with NITRUS CARBIDE- teeth allows you to cut longer, cut more and cut faster than traditional carbide teeth products on the market today. MILWAUKEE® NITRUS CARBIDE- technology eliminates the trade off between life and speed of cut compared to traditional carbide teeth blades. The blade delivers 3X the life of existing carbide teeth reciprocating saw blades to continuously make the toughest cast iron removals on the job."

Contact: [Customer.Service@milwaukeetool.com](mailto:Customer.Service@milwaukeetool.com)



SAVE THE DATE  
**2021**

CONFERENCE: FEB. 22-24  
MARKETPLACE: FEB. 23-25  
INDIANA CONVENTION CENTER  
**INDIANAPOLIS, IN**

**SECORRPHON AC 200  
BY HERMANN SEWERIN GMBH**

<https://www.sewerin.com/us/>



“SeCorrPhon AC 200 for perfect water leak detection: easy-to-read measurement value display and automated filter selection

The SeCorrPhonn AC 200 is developed for professional water leak detection. It combines the characteristics of a correlator with acoustic water leak detection: prelocation, pinpointing and correlation in one single system.

The SeCorrPhon AC 200 is based on the tried and tested housing and hardware concept of the AQUAPHON® A 200 by Sewerin. Each is ideal for use for leak detection across all sections, materials, diameters and lengths of pipelines. Numerous additional functions are also available for complex location scenarios – whatever your leak detection requirements, this product will fulfil all of them.”

**Contact:** [ingo.matlachowski@sewerin.com](mailto:ingo.matlachowski@sewerin.com)



**SABRE SBR BY EARTHTEK ENVIRONMENTAL**

[www.packageplants.com](http://www.packageplants.com)



The Sabre SBR utilizes the most advanced technology, and equipment to meet the most stringent effluent limits. There are numerous advantages to choosing the Sabre SBR. These benefits include effective treatment for the removal of BOD, TSS, ammonia, and nutrients such as nitrogen and phosphorus. Simplicity, cost-effectiveness, and a reduced foot print are several other benefits of this treatment process. The Sabre SBR excels in variable flow conditions, which is accomplished automatically by phase timing or fill level selection. For additional information, and benefits of the Sabre SBR, please contact Earthtek Environmental.

**Contact:** [info@packageplants.com](mailto:info@packageplants.com)



**MAINTENANCE AND REPAIR OF PROKASRO REHABILITATION EQUIPMENT BY PROKASRO SERVICES USA INC.**

[www.prokasrousa.com](http://www.prokasrousa.com)

“In order to be able to handle customer requests flexibly, our professional technical support is available by telephone, email or in person. In almost all cases, we can provide immediate assistance or provide technical documentation. Either we come to your construction site with our equipment or we are on site with our service technicians. No matter where in the world you need us. We know how important a successful completion of your construction site is.

Talk to us about specific programs that we can tailor to your needs. ProKASRO Services USA can provide training for maintenance and repair of your equipment for you to self-perform at your facility, or we can set up a program to have our technicians facilitate these repairs at our location. Either way, we want you to remain productive and efficient. When you're down, we will pick you back up. Our facility here in the US has spare cutters, cameras, UV trains, packers, cables and components to get you running again while repairs are made. In some cases, we even have the capability to ship loaner equipment across the continental United States SAME DAY!”

**Contact:** [jjarson@prokasrousa.com](mailto:jjarson@prokasrousa.com)



SAVE THE DATE  
**2021**

CONFERENCE: FEB. 22-24  
MARKETPLACE: FEB. 23-25  
INDIANA CONVENTION CENTER  
**INDIANAPOLIS, IN**



## TURBOCOAG® ELECTROCOAGULATION REACTOR BY AVIVID WATER TECHNOLOGY LLC

[www.avividwater.com](http://www.avividwater.com)

"Avid Water Technology provides advanced water purification via its patented TurboCoag® electrocoagulation technology to treat water contaminated with emulsified oils, heavy metals, suspended solids, and microorganisms. The patented anode cartridge design solves the fundamental problems of EC application by preventing anode fouling and internal sludge buildup.

TurboCoag® reduces OPEX for the operator in three distinct ways:

- sludge disposal by 30-70%
- chemical consumption by 70-100%
- biocide consumption by 100%

Unique Benefits

- Continuous water treatment
- Controlled dwell time
- No fouling
- No sludge in the reactor
- Low maintenance
- Faster removal of contaminants
- Higher level of suspended solids handled
- Strong flocculant that is easily filtered or quickly settled"

Contact: [tracy.kessner@avividwater.com](mailto:tracy.kessner@avividwater.com)



**HANDS FREE FOR TEAM TALK**

**COMMUNICATION AND SAFETY**  
**APPI-Com** is the world's most advanced wireless tactical field communication device. It is a fully duplex system allowing **Hands-Free** communication between team members in the most dangerous and critical situations faced by work at height, construction, heavy industry, utility, fire, law enforcement.

**APPI-Com** is easy to operate, simply powered by your radio and you're ready to communicate, hands free, on a secure, powerful and coded network.

The system is supported with 2 team leaders and multiple team members that are always connected **whatever the group size, anywhere, anytime.**

**APPI-Com** has multiple built-in features and automatic ambient noise to focus on the mission.

**HANDS-FREE FULL-DUPLEX RADIO**  
**AUTONOMOUS DIGITAL NETWORK**  
**NO BASE, LINE, BATTERY ISSUES**  
**1.3 MI RANGE (2km)**  
**SHOCKPROOF**  
**WEATHERPROOF**

**CONFIDENTIALITY**  
 APPI-Com features a secure, 4-Audio Compression network with seconds, authentication and encrypted, without any installation.

**SAFELINE**  
 Alerts you know who is communicating and be alerted when a team member leaves the loop.

**MAN DOWN ALERT**  
 Emergency assistance for near down situations with vocal alert.

**APPI**  
 COMMUNICATION

Range > 1.3 mi (2km)

## APPI HANDS FREE COMMUNICATION BY LANIER SUPPLY/IPG

[www.laniersupply.com](http://www.laniersupply.com)

HANDS FREE FOR TEAM TALK. WIRELESS COMMUNICATING IN ANY ENVIRONMENT.

Contact: [steve.dunlap@laniersupply.com](mailto:steve.dunlap@laniersupply.com)

SAVE THE DATE  
**2021**

CONFERENCE: FEB. 22-24  
 MARKETPLACE: FEB. 23-25  
 INDIANA CONVENTION CENTER  
**INDIANAPOLIS, IN**



## DRAINTRACKER SPECIALTY CAMERA BY MYTANA

[www.MyTana.com](http://www.MyTana.com)

MyTana's new DrainTracker moves through those tough traps and smaller lines in the house to verify grease and scale removal. This affordable mini camera features a super-flexible 50' push-rod, a color, HD, mini camera head and a built in 512Hz sonde. The entire one-piece unit weighs just 15 lbs for easy transport. A complete system with complete support, direct from our St. Paul, Minnesota factory.

**Contact:** 1-800-328-8170



## M745 CABLE MACHINE BY MYTANA

[www.MyTana.com](http://www.MyTana.com)

MyTana's M745 variable speed cable machine and optional Sinkline Kit gives you big power in a small package to tackle tough blockages in 1½" to 6" lines. The machine's variable speed drive lets you throttle up to 300 rpm, or down to 100 rpm as you work through obstructions and debris. Easily swap in the Sinkline Kit to work on smaller lines. The highly mobile M745 is a bargain with all-around cleaning capabilities. Made in the USA.

**Contact:** 1-800-328-8170

## EPOXY SPRAYCOATER SYSTEM BY PARAMOUNT PIPE LINING PRODUCTS LLC

[www.paramountcipp.com](http://www.paramountcipp.com)

"FUTURE OF PIPE COATING IS HERE! SprayCoating System was developed to serve professionals looking to solve aging-pipe related problems in countries all over the world. Whatever the problem is, SprayCoating can provide complete solutions. We specialize in small-diameter pipe rehabilitation using advanced coating technologies.



SprayCoater pipe coating equipment brings a new way to fix pipe related problems. Renovate old or deteriorated drains and sewers from 32mm (1 ¼") to 200mm (8") with the SprayCoater System. The coating applied provides a damp-proof, corrosion resistant, wear-resistant and non-corrosive lining. Spraycoat is a high-performance pipe coating epoxy. Spraycoat Epoxy is packaged in handy cartridges, making it a simple and mess-free solution. Designed exclusively for the SprayCoater Mini- and MidiCoater equipment.

Spraycoat epoxy resin is specially developed for waste- and rainwater pipes, and it is suitable for pipe materials such as PVC, clay, stainless steel, concrete, copper, and cast iron. This versatility makes it the perfect choice for most sewage and drains environment. Spraycoat Epoxy can also be used alongside other sewer renovation solutions for a variety of applications, such as spot repairs, relining connector lines, and more."

**Contact:** 1-833-663-2477



SAVE THE DATE

2021

CONFERENCE: FEB. 22-24  
MARKETPLACE: FEB. 23-25  
INDIANA CONVENTION CENTER  
INDIANAPOLIS, IN





## PARAMOUNT QUANTUM CURED-IN-PLACE-PIPE LINER BY PARAMOUNT PIPE LINING PRODUCTS LLC

[www.paramountcipp.com](http://www.paramountcipp.com)

Paramount was founded by industry pioneers focused on cured-in-place pipe (CIPP) technology, our team has developed the most innovative products supplied worldwide. The Paramount CIPP products are suited for wastewater pipeline repair and can be used to rehabilitate sanitary sewers, storm sewers and force mains. Paramount CIPP is a jointless pipe-within-a-pipe with the capability to rehabilitate pipelines ranging in diameter from 2 to 96 inches and to negotiate bends.

Contact: 1-833-663-2477

## CURED-IN-PLACE-PIPE RESIN BY PARAMOUNT PIPE LINING PRODUCTS LLC

[www.paramountcipp.com](http://www.paramountcipp.com)

Paramount Pipe Lining Products Inversion Drums High-quality workmanship and clever design enable an optimal result

The Paramount Inversion drum has been specially designed to install the liner using air pressure. The high quality inversion drum has many useful features.

The special construction of the drum enables hot water & steam curing of the inverted liner while maintaining the liner profile to dramatically reduce the curing time of the Paramount Royale resins.

The optional camera insertion valve also allows the inspection of the inverted liner "under pressure" before and throughout the curing process. To optimize the working time, all exchangeable inversion parts are equipped with fast release couplings.

The inversion heads are designed with 45's, 90's bends, as well as straight nozzles in liner inversion diameter 2" to 8". Extension tubes attach between the inversion heads and drum to provide ease of installation for all application and supplied as part of the basic equipment.

Contact: 1-833-663-2477



## ECA GROUP SEWER CAMERAS BY LANIER SUPPLY/IPG

[www.laniersupply.com](http://www.laniersupply.com)

Sewer inspection, full range of solutions for any type of inspection and measurements inside a sewer network

Contact: [steve.dunlap@laniersupply.com](mailto:steve.dunlap@laniersupply.com)

SAVE THE DATE  
**2021**

CONFERENCE: FEB. 22-24  
MARKETPLACE: FEB. 23-25  
INDIANA CONVENTION CENTER  
**INDIANAPOLIS, IN**



## THE SERVICE PROGRAM BY WESTROM SOFTWARE

[www.theserviceprogram.com](http://www.theserviceprogram.com)

The Service Program is the leading QuickBooks Add-On Software for Portable Toilets and Septic Services. Empower your drivers to be both paperless efficient while in the field. Streamline your business by optimizing routes using Google Maps integration. Bill for any service frequency directly into QuickBooks. Set-up a recurring pump out schedule, track pump out history and generate dump location reports. Scan QR Codes when dropping off, servicing or picking up a can and track rentals. Quickly track and manage work orders with recurring reminders. Retrieve customer signatures on invoices, receive payments, upload images and more.

**Contact:** 866-480-1879

PRODUCT

## GLADIO KNIFE GATE VALVES BY RIV RUBINETTERIE ITALIANE VELATTA SPA

[www.riv-vg.com](http://www.riv-vg.com)

GLADIO Knife gate valve with Stainless steel blade, double-acting pneumatic jack, flanges ANSI 150

GLADIO is a gate valve where, in addition to the aesthetic side, our engineers have managed the particular features and details, trying not to leave anything to chance.

Due to its special design feature, GLADIO is a gate valve called "anti-clogging" and can be installed in any position.

Large-size self-cleaning seat.

Security: GLADIO has a robust protective casing, which completely isolates the moving parts of the gate valve.

Stainless steel screws and tie rods to prevent corrosion.

Equipped with an open/closed position indicator.

Simple maintenance: all parts, when worn out, are easily replaceable.

**Contact:** [export.sales@riv-vg.com](mailto:export.sales@riv-vg.com)



PRODUCT

**Riv**  
Rubinetterie Italiane Velatta SpA  
since 1950



## RIV LEVER GATE VALVES BY RIV RUBINETTERIE ITALIANE VELATTA SPA

[www.riv-vg.com](http://www.riv-vg.com)

The Riv original lever gate valves, the most popular on the market. Available with flange/thread and double NPT threads.

**Contact:** [export.sales@riv-vg.com](mailto:export.sales@riv-vg.com)

SAVE THE DATE  
**2021**

CONFERENCE: FEB. 22-24  
MARKETPLACE: FEB. 23-25  
INDIANA CONVENTION CENTER  
**INDIANAPOLIS, IN**





**PRESSURE & VACUUM RELIEF VALVES BY RIV RUBINETTERIE ITALIANE VELATTA SPA**

[www.riv-vg.com](http://www.riv-vg.com)

The new Riv's generation of pressure and vacuum relief valves high performance, in fact these valves can be mounted directly to the blower, and resist up to +356°F all the components are made in solid metal, NO PLASTIC INSIDE for top performance

Contact: [export.sales@riv-vg.com](mailto:export.sales@riv-vg.com)



**FLOUT® GRAVITY POWERED DOSING SYSTEMS BY RISSY PLASTICS, LLC**

[flout.net](http://flout.net)

The Flout® is a gravity powered, non-siphon dosing device that is at the heart of all kinds of water and wastewater handling systems. Since 1992, thousands have been installed worldwide with excellent results. Unlike a siphon, a Flout® never needs to be primed, does not need a downward projecting trap, and provides more drawdown compared to similar size siphons. Easily integrated into any dosing chamber, new or existing, these systems can be tailored for just about any number of outlets and flow requirements. Single outlet units may dose to a distribution box. Multiple outlet units can handle larger flows and provide perfect splitting, eliminating distribution boxes. Systems are also available to alternate and sequence multiple Flout® units.

Contact: [tanxrus@aol.com](mailto:tanxrus@aol.com)



**EMERGENCY BACKUP LIFT STATION STANDBY SYSTEM BY THOMPSON PUMP**

[www.thompsonpump.com](http://www.thompsonpump.com)



"Thompson Pump's diesel-driven backup pumps are quickly replacing generator backup systems as the ideal contingency plan. The Thompson Backup System's permanently installed standby units continue pumping despite power loss or primary pump failures, and act as the primary pumping system during maintenance or repairs. Our exclusive and eco-friendly Enviroprime System® pumps are available in size 2" to 18" and can easily handle flows up to 11,000 gallons-per-minute (GPM) and solids

up to 4" in diameter. The Thompson Enviroprime System®, unlike other automatic priming systems, actively prevents blow-by or pumpage from discharging on the ground, keeping the environment clean and safe. The Thompson Backup System is also available with Oil-less Vacuum Technology."

Contact: 386-767-7310



SAVE THE DATE  
**2021**

CONFERENCE: FEB. 22-24  
MARKETPLACE: FEB. 23-25  
INDIANA CONVENTION CENTER  
**INDIANAPOLIS, IN**



**LIBERATORMAX BY SETCOM CORPORATION**

[www.setcomcorp.com](http://www.setcomcorp.com)

Setcom's LiberatorMAX System offers the most functionality for the least cost. Highly ruggedized headsets make this system ideal for demanding, high-noise environments. Completely portable with no base to lug around. This multi-person intercom system can accommodate up to 8 full-duplex users on any of the 8 available channels. Enhance worker and operator safety and efficiency through the full duplex, hands-free communication and hearing protection offered with LiberatorMAX. The perfect communication system for Wastewater Professionals.

Contact: [sales@setcomcorp.com](mailto:sales@setcomcorp.com)



**CYCLOBLOWER® VHX BY GARDNER DENVER**

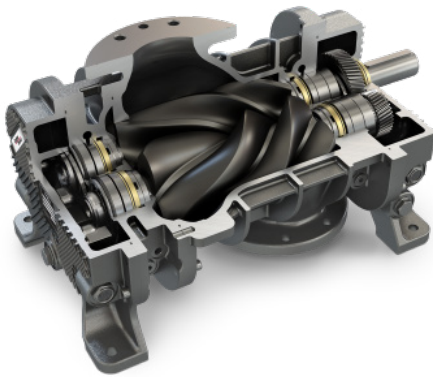
[www.gardnerdenver.com](http://www.gardnerdenver.com)

"The CycloBlower® VHX utilizes a revolutionary variable helix rotor design. By adding a variable helix to our helical screw rotor design, we achieve new, unmatched levels of blower performance and efficiency. *Why Variable Helix?*

- Faster Internal Compression
- Significantly Larger Discharge Port
- Eliminates Air Losses
- Higher Efficiencies
- Efficient Turndown Capability
- Save up to 35% on your Energy Costs

Customers should be excited about the CycloBlower® VHX because it's the most efficient blower in the world, backed by the Gardner Denver reputation of quality and durability. Built with pride in Sedalia, Missouri with an incredible team that's committed to quality and committed to making the best blowers in the marketplace.

Contact: [liz.gengenbacher@gardnerdenver.com](mailto:liz.gengenbacher@gardnerdenver.com)



**UR 70: THE NEW 10000 PSI INDUSTRIAL TURBO NOZZLE BY PA S.P.A**

[www.pa-etl.it](http://www.pa-etl.it)

- Stainless steel body + tungsten carbide nozzle and seat for outstanding durability and heavy-duty performance up to 10000 psi.
- New patented Mass Balancing System (MBS) minimizing the vibrations to the lowest level: unmatched comfort for the operator and prevention of occupational diseases.
- Low rotational speed resulting in high impingement force and superior cleaning efficiency.
- PA spring loaded system preventing shocks between the nozzle and the seat: hence the nozzle can be started in every position.

Max. operating pressure: 10150 psi ( 700 bar) Min. operating pressure: 2600 psi ( 180 bar) Nozzle size: 03; 035; 04; 05; 06; 065; 07; 08 Max. water temperature: 140°F ( 60°C )

Contact: [stefania.benetti@pa-etl.it](mailto:stefania.benetti@pa-etl.it)



SAVE THE DATE  
**2021**

CONFERENCE: FEB. 22-24  
MARKETPLACE: FEB. 23-25  
INDIANA CONVENTION CENTER  
**INDIANAPOLIS, IN**





## SWP LINER AND INSTALLATION BY GROUT SCOUTS INC

[www.groutscoutsinc.com](http://www.groutscoutsinc.com)

Our product is a polyvinyl chloride adhesive strip that lines the host pipe & is grouted in place via the annular space. The dimensions are 1/2 inch, 3/4 inch as well as 1 inch thick by 5 and 1/2 inch width strips. The length is an average of 2800' and has a male and female lock that uses PVC cement glue to maintain it's shape. Additional footage can be added but is limited to the size and weight restrictions of the spool and transportation of such quantities of this unique product.

Contact: [groutmanjr@gmail.com](mailto:groutmanjr@gmail.com)



## PRELOS-: PRESSURIZED LIQUID-ONLY SEWER BY ORENCO SYSTEMS, INC

[www.orenco.com](http://www.orenco.com)

The Prelos- Collection System from Orenco® is the answer for community sewer, offering low life-cycle and initial capital costs and enabling more cost-effective wastewater treatment. This technology is based on nearly four decades of proven sewer solutions.

### Prelos offers:

- Small-diameter, liquid-only sewer lines that follow grade and carry primary-treated effluent to the treatment facility
- Minimal community disruption during installation
- Reserve storage in each on-lot tank
- Economic sustainability
- Deferred capital costs on slow build-out developments

Prelos: The Next Step in Sewer Evolution

Contact: [info@orenco.com](mailto:info@orenco.com)



## PRELOS-: PRESSURIZED LIQUID-ONLY SEWER BY ORENCO SYSTEMS, INC

[www.orenco.com](http://www.orenco.com)

With ClickTight- from Orenco®, wiring a wastewater system just got a whole lot easier. The ClickTight Controls Package is the complete, integrated solution for making fast, accurate, secure wiring connections in onsite wastewater systems. Connect a control panel, up to four floats, and a pump. *With ClickTight, you can*

- Eliminate splice boxes and wire nuts
- Connect to a broad range of pumps
- Reduce common wiring errors with color-coded wires and terminals
- Protect against the effects of moisture and corrosion
- Decrease installation time and save money

ClickTight: Simple. Secure. Smart.

Contact: [info@orenco.com](mailto:info@orenco.com)



SAVE THE DATE  
**2021**

CONFERENCE: FEB. 22-24  
MARKETPLACE: FEB. 23-25  
INDIANA CONVENTION CENTER  
**INDIANAPOLIS, IN**

**MICROTRAXX SL 436  
BY ROHMAC INC**

[www.rohmacinc.com](http://www.rohmacinc.com)



The MICROTRAXX SL 436 is a radio-remote controlled, diesel engine powered, track loader that is designed to clean 48 inch box, or 60 inch diameter round culverts. The machine will lift 1500 lb., and features an upper chassis with 360° swing ability. The loader accepts universal skid steer attachments, and has auxiliary hydraulics. Steel tracks provide maximum traction for soft underfoot conditions. The center lift point allows the machine to be set into a work zone. MICROTRAXX Equipment is manufactured in the USA by Rohmac Inc.

**Contact:** [info@rohmacinc.com](mailto:info@rohmacinc.com)



**NEW PRESSURE RELIEF VALVE  
BY CHERNE**

<https://www.oatey.com/brands/cherne>



"Industry's first Dual-Stage Pressure Relief Valve designed specifically for pipe plugs.

- Protects against over inflation of plug by releasing pressurized air
- Resets quickly at or just above inflation pressure
- No more blown up plugs up in the field
- Safety device that prevents injuries
- Comes equipped on all larger Cherne plugs

Email [chernesupport@oatey.com](mailto:chernesupport@oatey.com) for more info"

**Contact:** [mkiene@oatey.com](mailto:mkiene@oatey.com)



**BOERGER VERTICAL MULTICRUSHER  
BY BOERGER, LLC**

[www.boerger.com](http://www.boerger.com)



The Multicrusher is an effective, widely applicable twin shaft grinder for processing debris including wood, wet wipes, plastics, textiles, etc. This ensures trouble-free operation of your pumps and downstream systems.

The Multicrusher can be retrofitted in most systems. In case of very confined space conditions, the NEW vertically installed Multicrusher is a great space-saving option! For maintenance work on a vertically installed Multicrusher, the back pull out design allows for easy maintenance of the blades, gear unit and drive.

**Contact:** [dvb@boerger.com](mailto:dvb@boerger.com)



SAVE THE DATE

2021

CONFERENCE: FEB. 22-24  
MARKETPLACE: FEB. 23-25  
INDIANA CONVENTION CENTER  
INDIANAPOLIS, IN



## ROVVER X BY ENVIROSIGHT

[www.envirosight.com](http://www.envirosight.com)

ROVVER X is the one pipe inspection system that lets an operator do everything—control inspections, view and record digital video, log observations, generate reports, and link directly to asset-management software. All these capabilities are packed into a simple three-piece layout, with no CCU or other components to clutter the workspace.

Twelve wheel options—plus camera lift, carriage and illumination accessories—mean ROVVER X transforms in seconds to inspect any size line. Its six-wheel drive with proportional steering navigates past obstacles, and overlapping wheels climb offsets better than tracks do. Powerful motors and a geared six-wheel drivetrain maximize travel range.

ROVVER X is built on an expandable digital backbone. Not only can you add side-scanning and laser profiling, you can view data from onboard sensors, automate tasks with macros, and measure defects on-screen. And future capabilities are limitless—ROVVER X's firmware updates automatically to the latest features.

Contact: 866-936-8476

## QUICKVIEW AIRHD BY ENVIROSIGHT

[www.envirosight.com](http://www.envirosight.com)

The Quickview airHD 2.0 helps you avoid confined space entry by capturing high-definition video from sewers and transmitting it wirelessly to a touchscreen tablet for live viewing. This latest version now offers dual-band Wi-Fi for increased connectivity and measurement capabilities. Use an intuitive tablet and custom Quickview app for fingertip control of zoom, illumination and tilt, as well as image capture and video recording, playback, annotation and sharing. This portable HD zoom camera travels in a compact roller case that easily fits in a pickup bed but extends to 16'—or longer. And with in-manhole centering capability as well as motorized tilt on the camera head and hands-free stabilization, set-up takes virtually no time at all.

Contact: 866-936-8476



## AMBER MBBR BY EARTHTEK ENVIRONMENTAL

[www.packageplants.com](http://www.packageplants.com)

The Amber MBBR is an attached-growth biological treatment process that uses special plastic carriers to create a large surface area for biofilm growth. The MBBR plant can be designed as a stand-alone treatment process or to provide pre-treatment, effluent polishing, nitrification, or nutrient reduction. The MBBR treatment process is typically used for carbon reduction, ammonia polishing, and high-strength wastewater treatment. This technology provides cost-effective treatment with minimal maintenance since MBBR processes self-maintain an optimum level of productive biofilm. Additional benefits to MBBR treatment include reduced footprint and cost compared to conventional activated sludge systems. For more information, please contact Earthtek Environmental.

Contact: [info@packageplants.com](mailto:info@packageplants.com)



SAVE THE DATE

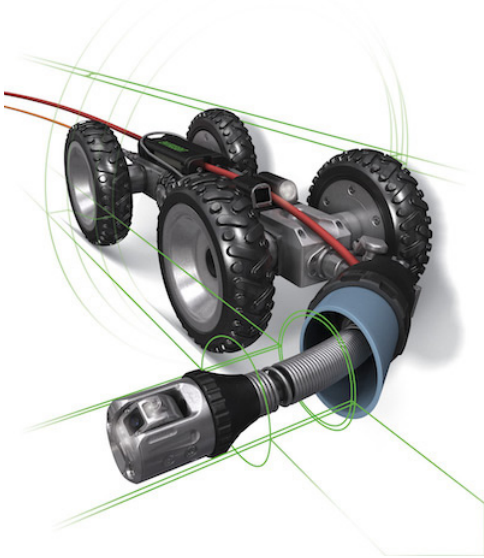
2021

CONFERENCE: FEB. 22-24  
MARKETPLACE: FEB. 23-25  
INDIANA CONVENTION CENTER  
INDIANAPOLIS, IN

**ROVVER X SAT II BY ENVIROSIGHT**

[www.envirosight.com](http://www.envirosight.com)

“Envirosight’s ROVVER X SAT II lateral launch inspection crawler maneuvers around obstacles and challenging pipe geometries to rapidly detect gas line cross bores in sewers and other hard-to-reach defects. The crawler can travel as far as 984 feet down mainlines at speeds up to 98 feet per minute, then launch its camera probe as far as 147 feet down adjoining service connections, at up to 23 feet per minute.



The ROVVER X SAT II also features a patent-pending belt-driven push mechanism that minimizes wear on the push rod while maximizing pushing force. The design, which is easy to clean and has field-replaceable belts, is intended to increase uptime and keep maintenance costs low. Steerable 8-wheel drive makes it easier to move past debris, roots, offsets and protruding taps. During launch, the pan/tilt lateral camera with detachable steering wand navigates through bends and branches in lateral lines. Easily reconfigured for a range of applications, the ROVVER X SAT II comes with wheels of varying sizes that interchange without tools, and a launch chute that accepts off-the-shelf PVC tubes to adapt to different pipe diameters. The complete range of configurations offers launch capabilities in pipes from six inches up to 80 inches in diameter. The crawler’s unique hinged body bends through vertical accesses as narrow as 12.5 inches in diameter, and locks rigid when not needed.

The ROVVER X SAT II system has three cameras:

- A launch camera with 360-degree pan articulation and +150/-30-degree tilt
- A five megapixel aiming camera that offers digital pan/tilt/zoom capability for pinpoint launching in any size line
- A rear-facing camera to help manage cable during reverse crawl

Pressure, inclination and distance sensors all feed into a user-friendly interface. Twin sonde transmitters allow accurate location of crawler and launch camera.”

**Contact:** 866-936-8476



**HOTJET II VAC’NJET JETTER/VACUUM/HYDRO-EXCAVATOR/POWER WASHER BY HOTJET USA**

<https://www.hotjetusa.com>



HotJet USA HotJet II VAC’NJETs are four-in-one workhorses featuring a hot or cold water JETTER, VACUUM, HYDRO-EXCAVATOR and POWER WASHER engineered on a 14k rated tandem axle trailer featuring 10GPM @ 4,000 PSI, 500 gallon spoils tank, Gardner Denver Vac/Blower and twin 220 gallon water tanks. On sale for \$79,995, these trailers offer quality, value and performance without the sticker shock of the big vac trucks. Call us with your questions and to learn how we can customize a Vac’NJet to your specifications toll free at 1-800-624-8186.

**Contact:** [chester@hotjetusa.com](mailto:chester@hotjetusa.com) / 1-800-624-8186



SAVE THE DATE

2021

CONFERENCE: FEB. 22-24  
MARKETPLACE: FEB. 23-25  
INDIANA CONVENTION CENTER  
INDIANAPOLIS, IN





**HOTJET II® HOT WATER TRAILER JETTER WITH HYDRAULIC REEL UPGRADE BY HOTJET USA**

<https://www.hotjetusa.com>



The very popular HotJet USA HotJet II trailer mounted jetter is available NOW with hydraulic reel upgrade for a limited time for \$34,995 with a savings of \$5,000. The HotJet II features a 35HP Vanguard Engine with 10GPM @ 4,000 output. Mounted on a heavy duty tandem axle trailer, the HotJet II features a 330 gallon water tank, comes equipped with power washing kit and is turn key ready for jetting upon delivery. Price includes delivery to lower 48 states and training. Contact Chester for more info at 1-800-624-8186.

**Contact:** [chester@hotjetusa.com](mailto:chester@hotjetusa.com) / 1-800-624-8186

**XTREMEFLOW III 1840 COLD WATER JETTER WITH HYDRAULIC HOSE REEL BY HOTJET USA**

<https://www.hotjetusa.com>



The HotJet USA cold water flusher 1840 XtremeFlow III trailer jetter is available now on sale for \$44,995 with a savings of \$5,000. With twin 35HP Vanguard Engines, the XtremeFlow III operates at a full 70HP with 18GPM @ 4,000 PSI output. Units are fully loaded and price includes delivery to lower 48 states and hands on equipment safety/operational training and business marketing with at our very popular Jetter Bootcamp.

**Contact:** [chester@hotjetusa.com](mailto:chester@hotjetusa.com) / 1-800-624-8186

SAVE THE DATE

2021

CONFERENCE: FEB. 22-24  
 MARKETPLACE: FEB. 23-25  
 INDIANA CONVENTION CENTER  
 INDIANAPOLIS, IN

**#weareessential**